



Certificate of Analysis

CANNABUSINESS LABORATORIES, LLC

Customer:

Popp's Farm, LLC
596 Sport Hill Rd
Easton, CT 06612
HMPG.000024

Received Date **12/1/2025**
Collection Date
COA Released **12/5/2025**
Comments

Sample ID **251201009**
Order Number **CB251201005**
Sample Name **CBD Lotion 1000mg**
External Sample ID
Batch Number **poppslotion25**
Product Type **Topical**
Sample Type **Topical**

CANNABINOID PROFILE

Analyte	LOQ (%)	% Weight	mg/g
CBC	0.01	0.116	1.160
CBD	0.01	1.704	17.04
CBDa	0.01	ND	ND
CBDV	0.01	0.021	0.205
CBG	0.01	0.038	0.380
CBGa	0.01	ND	ND
CBN	0.01	ND	ND
d8-THC	0.01	ND	ND
d9-THC	0.01	0.020	0.197
THCa	0.01	ND	ND
THCV	0.01	ND	ND
Total Cannabinoids		1.899	18.99
Total Potential THC		0.020	0.196
Total Potential CBD		1.704	17.04
Total Potential CBG		0.038	0.380

Ratio of Total Potential CBD to Total Potential THC **85.20 : 1**

Ratio of Total Potential CBG to Total Potential THC **1.90 : 1**

*Total Cannabinoids refers to the sum of all cannabinoids detected.

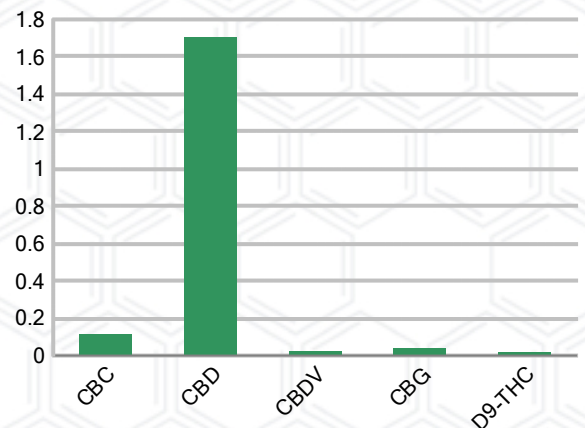
*Total Potential CBD = $(0.877 \times \text{CBDa}) + \text{CBD}$. *Total Potential THC = $(0.877 \times \text{THCa}) + \text{THC}$. *Total Potential CBG = $(0.877 \times \text{CBGa}) + \text{CBG}$.

*Total Potential THC/CBD are calculated to take into account the loss of an acid group during decarboxylation.

SAMPLE IMAGE



CANNABINOID % Weight



J. Hobgood
Laboratory Manager

SIGNATURE

Jamie Hobgood

LABORATORY MANAGER

12/05/2025 8:00 AM

DATE

This product has been tested by CannaBusiness Laboratories using validated testing methodologies and a quality system. Values reported relate only to the product tested. CannaBusiness Laboratories makes no claims as to the efficacy, safety, or other risks associated with any detected or non-detected levels of any compounds reported herein. This Certificate shall not be reproduced except in full, without the written permission of CannaBusiness Laboratories. Photo is of sample received by the lab and may vary from final packaging. The results apply to the sample as received.



Certificate of Analysis

CANNABUSINESS LABORATORIES, LLC

Customer

Popp's Farm, LLC
596 Sport Hill Rd
Easton, CT 06612
HMPG.000024



Overall Batch Results

Potency (mg/g)	

Sample Name: CBD Lotion 1000mg
Sample ID: 251201009
Order Number: CB251201005
Product Type: Topical
Sample Type: Topical
Received Date: 12/01/2025
Batch Number: poppslotion25
Collection Date:

COA released: 12/05/2025 8:00 AM

Potency (mg/g)

Date Tested: 12/04/2025 Method: CB-SOP-028 Instrument: HPLC-PDA#1(HempAnalyzer4)

Analyte	Result	Units	LOQ	LOD	Limits	Pass / Fail
CBC (Cannabichromene)	0.116	%	0.010			
CBC (Cannabichromene) mg/g	1.160	mg/g	0.100			
CBD (Cannabidiol)	1.704	%	0.010			
CBD (Cannabidiol) mg/g	17.04	mg/g	0.100			
CBDa (Cannabidiolic Acid)	ND	%	0.010			
CBDa (Cannabidiolic Acid) mg/g	ND	mg/g	0.100			
CBDV (Cannabidivarin)	0.021	%	0.010			
CBDV (Cannabidivarin) mg/g	0.205	mg/g	0.100			
CBG (Cannabigerol)	0.038	%	0.010			
CBG (Cannabigerol) mg/g	0.380	mg/g	0.100			
CBGa (Cannabigerolic Acid)	ND	%	0.010			
CBGa (Cannabigerolic Acid) mg/g	ND	mg/g	0.100			
CBN (Cannabinol)	ND	%	0.010			
CBN (Cannabinol) mg/g	ND	mg/g	0.100			
D8-THC (D8-Tetrahydrocannabinol)	ND	%	0.010			
D8-THC (D8-Tetrahydrocannabinol) mg/g	ND	mg/g	0.100			
D9-THC (D9-Tetrahydrocannabinol)	0.020	%	0.010			
D9-THC (D9-Tetrahydrocannabinol) mg/g	0.197	mg/g	0.100			
THCa (Tetrahydrocannabinolic Acid)	ND	%	0.010			
THCa (Tetrahydrocannabinolic Acid) mg/g	ND	mg/g	0.100			
THCV (Tetrahydrocannabivarin)	ND	%	0.010			
THCV (Tetrahydrocannabivarin) mg/g	ND	mg/g	0.100			



J. Hobgood
Laboratory Manager

SIGNATURE

Jamie Hobgood

12/05/2025 8:00 AM

DATE

M of U = Measurement, NT = Not tested, ND = Not detected; LOQ = Limit of Quantitation; <LOQ = Detected; >ULOL = Above upper limit of linearity; CFU/g = Colony forming units per 1 gram; TNTC = Too numerous to count

This product has been tested by CannaBusiness Laboratories using validated testing methodologies and a quality system. Values reported relate only to the product tested. CannaBusiness Laboratories makes no claims as to the efficacy, safety, or other risks associated with any detected or non-detected levels of any compounds reported herein. This Certificate shall not be reproduced except in full, without the written permission of CannaBusiness Laboratories. Photo is of sample received by the lab and may vary from final packaging. The results apply to the sample as received.